

*Process sealed—withstands soldering and cleaning processes.



A

- ULTRA-MINIATURE LOW PROFILE DESIGN—APPROXIMATELY .250 IN. (6 mm) SQ.—THREE SURFACE MOUNT TERMINAL STYLES
- TIN-LEAD ALLOY COATS ALL SIDES OF TERMINALS FOR JOINT INTEGRITY
- TAPE AND REEL PACKAGING AVAILABLE FOR AUTOMATED PLACEMENT
- PROCESS COMPATIBLE—WITHSTANDS IR AND VAPOR PHASE REFLOW SOLDERING AND CLEANING PROCESSES—HIGH TEMPERATURE MATERIALS (UL 94V-0)
- SEALED CONSTRUCTION—INTERNAL SILICONE RUBBER ACTUATOR SEAL AND INSERT MOLDED TERMINALS STANDARD

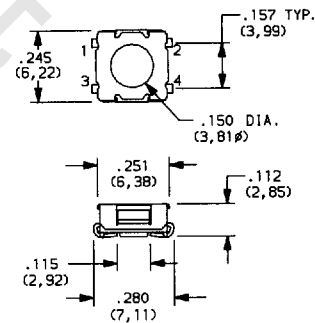
WITH J SURFACE MOUNT TERMINALS

PART NO.	ACTUATOR HEIGHT	SWITCH FUNCTION	
		POS. 1	POS. 2
KT11B0JM	FLUSH	OFF	MOM.
KT11B1JM	.025 (0,64)	OFF	MOM.
KT11B2JM	.088 (2,24)	OFF	MOM.
KT11P2JM	.093 (2,36)	OFF	MOM.
KT11P3JM	.044 (1,12)	OFF	MOM.
KT11P4JM	.156 (3,96)	OFF	MOM.
Conn. Terms		OPEN	1,2-3,4
Schematic			
SPST			

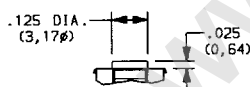
MOM. = MOMENTARY



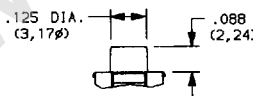
WITH B0 ACTUATOR



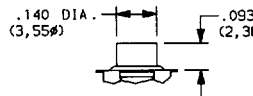
Part No. Shown: KT11B0JM



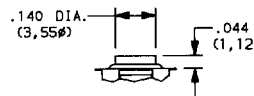
WITH B1 SILICONE RUBBER ACTUATOR



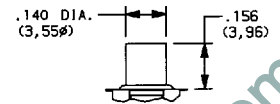
WITH B2 SILICONE RUBBER ACTUATOR



WITH P2 HARD PLASTIC ACTUATOR



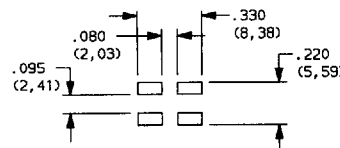
WITH P3 HARD PLASTIC ACTUATOR



WITH P4 HARD PLASTIC ACTUATOR

PC MOUNTING

J TERMINAL STYLE



Suggested mounting patterns, see CAUTION page A-19.

HOW TO ORDER

Complete part numbers for KT SERIES SEALED SURFACE MOUNT MINIATURE KEY SWITCHES are shown on pages A-17 and A-18. Switches supplied in rigid dispensing tubes or on embossed antistatic tape and reels per EIA 481-1.

SPECIFICATIONS

CONTACT RATING: 1.0 VA max. @ 50 V AC or DC max.
MECHANICAL & ELECTRICAL LIFE: 100,000 make-and-break cycles at full load.
CONTACT RESISTANCE: Below 50 milliohms typ. initial @ 2–4 V DC, 100 mA.
INSULATION RESISTANCE: 10⁹ ohms min.
DIELECTRIC STRENGTH: 250 V RMS min. @ sea level.
OPERATING TEMPERATURE: -40°C to 90°C.
SOLDERABILITY: Per MIL-STD-202F method 208D, or EIA RS-186E method 9 (1 hour steam aging).
PACKAGING: Switches supplied in rigid dispensing tubes or on embossed antistatic tape and reels per EIA 481-1. Tape and cover strip are conductive for use near statically sensitive components. Consult factory.

MATERIALS

BASE: LCP (UL 94V-0).
ACTUATOR: B0, B1, B2 actuators: Silicone rubber.
P2, P3, P4 actuators: 4/6 nylon.
SEAL: Silicone rubber.
HOUSING: Stainless steel.
SWITCH SUPPORT: Stainless steel, tin plated.
MOVABLE CONTACT: Stainless steel, silver plated.
STATIONARY CONTACTS: Copper alloy, silver plated.
TERMINALS: Copper alloy, with tin-lead alloy over nickel plate. All terminals insert molded.

NOTE: Specifications and materials listed above are general specifications. Specifications available for specific and custom switches, consult factory.

CAUTION: PC mounting layouts and pads as shown are designed to be compatible with the latest equipment and reflow techniques. Care should be exercised, however, in the design and location of PC lands to suit individual needs. Orientation relative to reflow direction may significantly impact solder joint integrity.